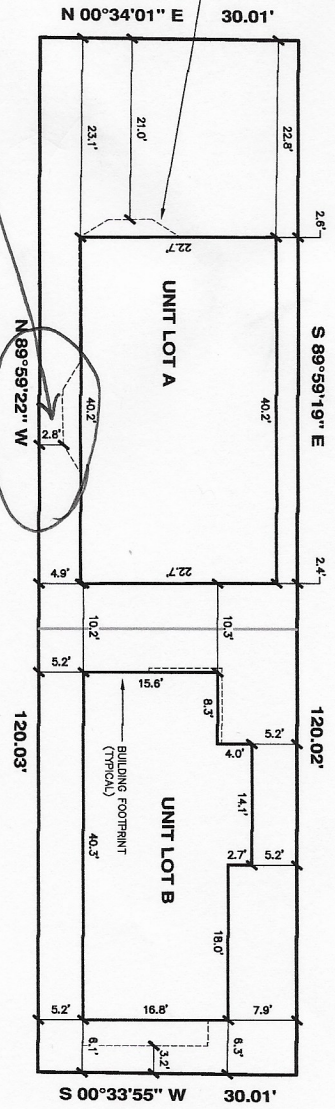


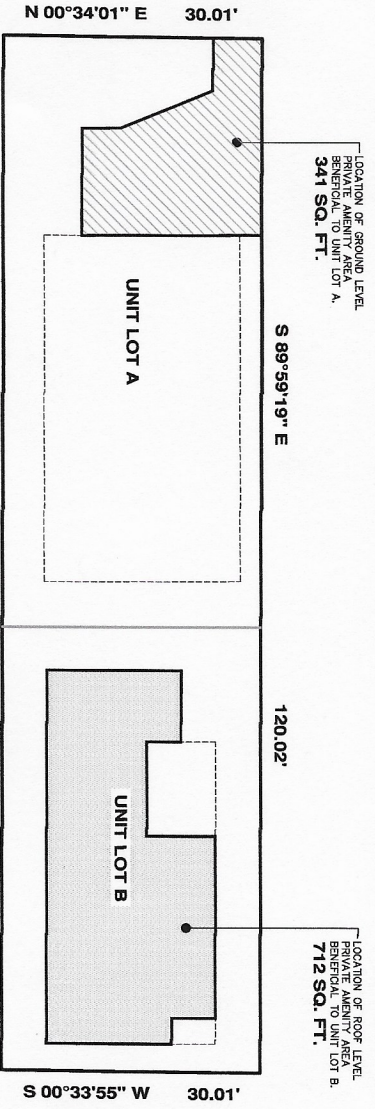
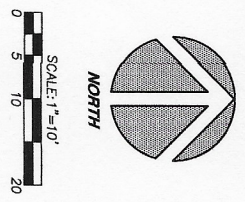
Exhibit D

OUTERMOST LIMITS OF BUILDING OVERHANGS INCLUDING EAVESLINE (TYPICAL)



BUILDING DIMENSION DETAIL

(SEE "BUILDING NOTE")



PRIVATE AMENITY AREA DETAIL

(SEE "PRIVATE AMENITY AREA NOTE")

PRIVATE AMENITY AREA NOTE:
THE LOCATION AND AREA OF PRIVATE AMENITY AREAS AS SHOWN HEREON ARE AS PER ARCHITECTURAL PLANS PREPARED BY LEMONS ARCHITECTURE, PLLC.

BUILDING NOTE:
ALL BUILDING DIMENSIONS, FOOTPRINTS AND BUILDING OFFSET DISTANCES SHOWN HEREON ARE FROM INFORMATION SHOWN ON THE ARCHITECTURAL PLANS PREPARED BY LEMONS ARCHITECTURE, PLLC., ON BEHALF OF PRS DEVELOPMENT, INC. WE PROVIDE NO CERTIFICATION THAT THESE FOOTPRINTS, DIMENSIONS, OR OFFSETS ARE AS CONSTRUCTED.



DATE: _____

CHADWICK WINTERS
LAND SURVEYING AND MAPPING
1422 N.W. 95TH ST., SEATTLE, WA 98147
PHONE: 206.297.0996
FAX: 206.297.0987
WEB: WWW.CHADWICKWINTERS.COM

SURVEY IN:
NE 1/4, SW 1/4, SEC. 24, T. 25 N., R. 3 E., W.M.
KING COUNTY, WASHINGTON

DRAWN BY: SKL	DATE: 11-09-16	PROJECT #: 16-5489
CHEK. BY: RHW	SCALE: 1" = 10'	SHEET: 8 OF 8