

1  
2  
3  
4  
5  
6  
7  
8  
9  
10  
11  
12  
13  
14  
15  
16  
17  
18  
19  
20  
21  
22  
23  
24  
25  
26  
27  
28

BEFORE THE HEARING EXAMINER  
FOR THE CITY OF SEATTLE

In re:  
APPROVAL OF APPLICATION NO. 3021625  
FOR PROJECT LOCATED AT 1706 ALKI AVE  
S.W.

No. MUP-16-024  
DECLARATION OF KATIE KENDALL

I, KATIE KENDALL, under penalty of perjury under the laws of the State of Washington, declare as follows:

1. I am an attorney with McCullough Hill Leary, PS, attorneys for Applicant 1706-1708 Alki Ave SW, LLC. I am competent to make this declaration based on my personal knowledge.

2. Attached as Exhibit A are true and correct copies of the identified critical areas near 1706 Alki Avenue SW and 1708 Alki Avenue SW, from the City of Seattle's GIS system, last accessed January 30, 2017.

3. Attached as Exhibit B is a true and correct copy of the GIS search for other critical areas, such as fish and wildlife habitat conservation or riparian corridors, in the vicinity of 1706

1 Alki Avenue SW and 1708 Alki Avenue SW, from the City of Seattle's GIS system, last accessed  
2 January 30, 2017.

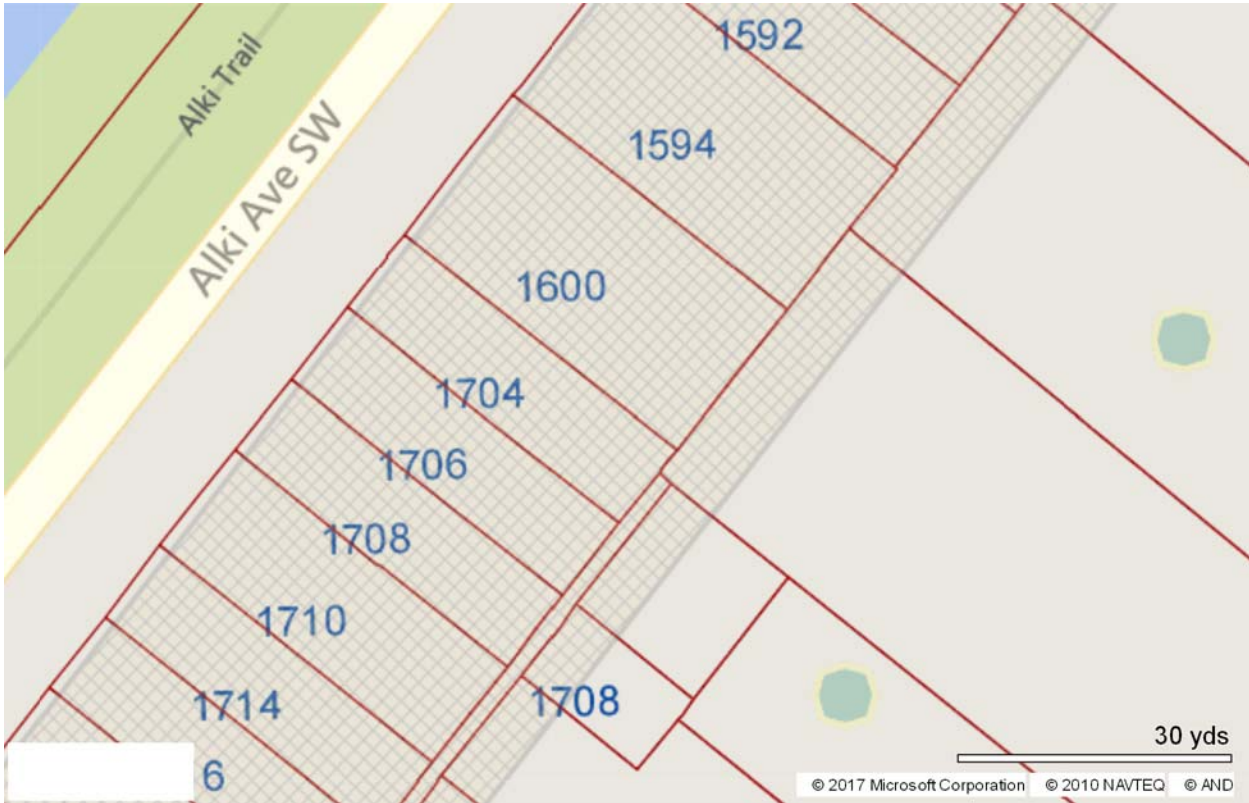
3 4. Attached as Exhibit C is a true and correct copy of the identified shoreline  
4 environment for 1706 Alki Avenue SW and 1708 Alki Avenue SW, from the City of Seattle's GIS  
5 system, last accessed January 30, 2017.  
6

7 I declare under penalty of perjury under the laws of the state of Washington that the  
8 foregoing is true and correct.

9 DATED this 30<sup>th</sup> day of January, 2017 at Seattle, Washington.  
10

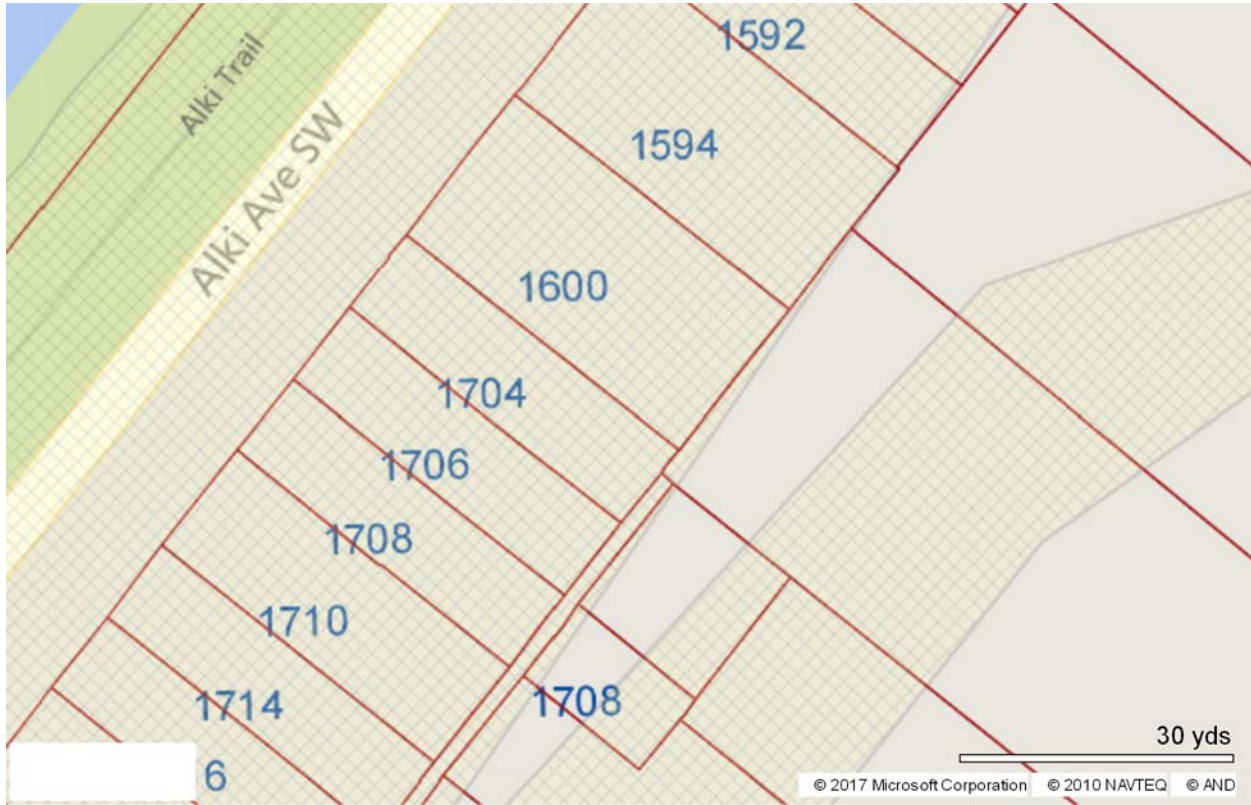
11   
12 \_\_\_\_\_  
13 KATIE KENDALL

# **EXHIBIT A**



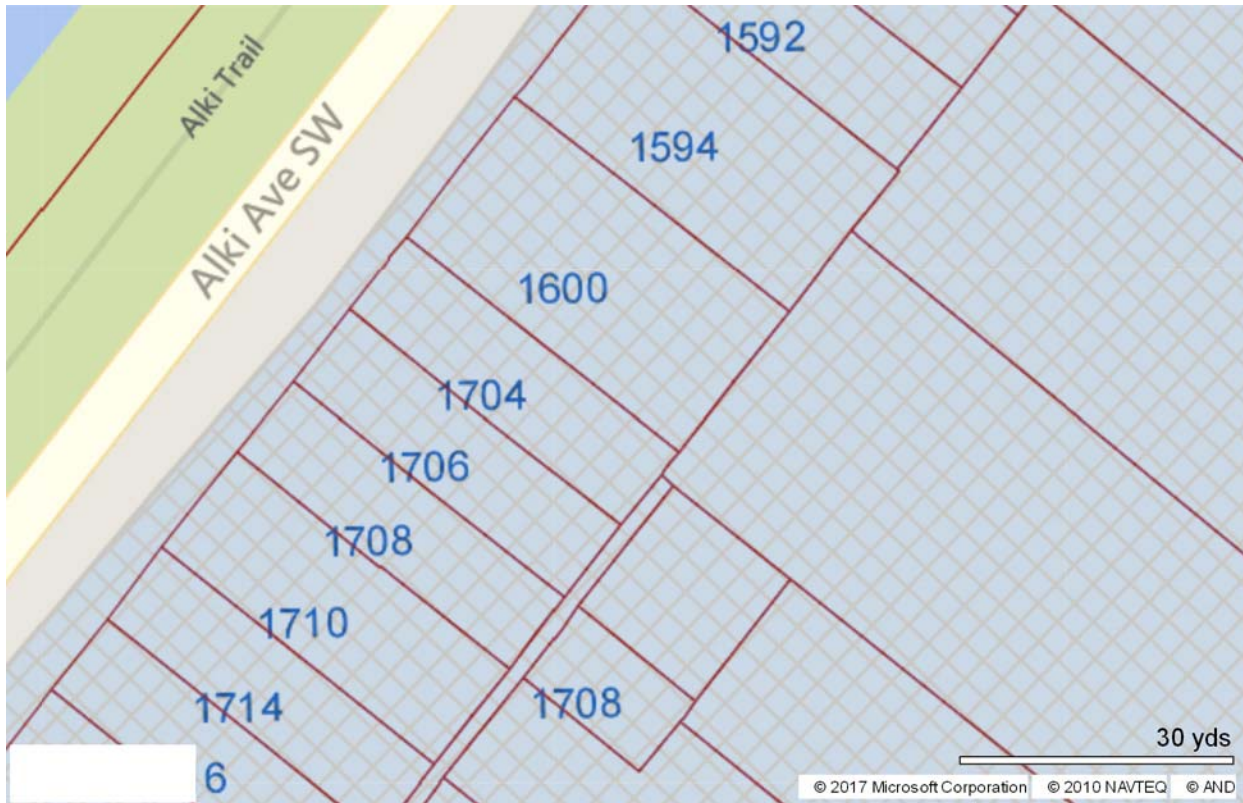
**Displaying layers:**  
HouseNumbers  
Parcels  
KnownSlideAreas

No warranties of any sort, including accuracy, fitness, or merchantability accompany this product.  
Copyright 2007, All Rights Reserved, City of Seattle



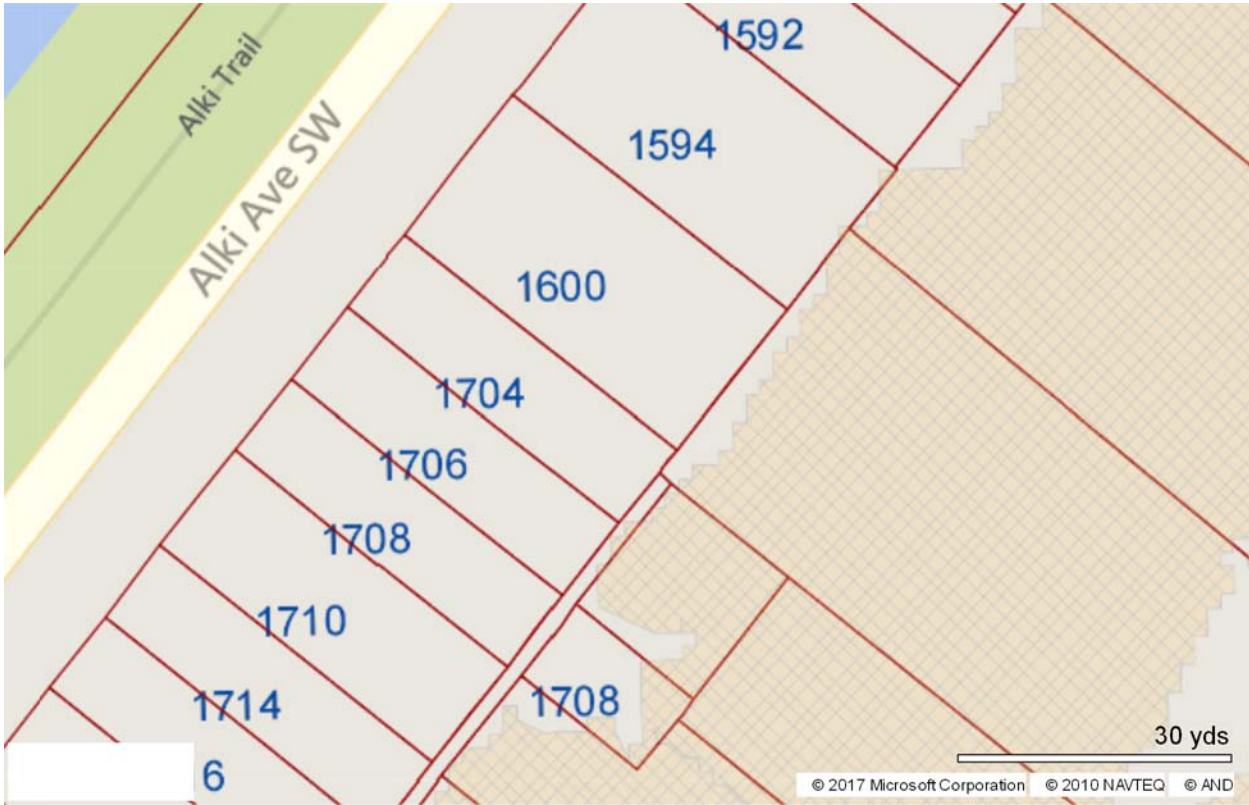
**Displaying layers:**  
HouseNumbers  
Parcels  
Liquefaction

No warranties of any sort, including accuracy, fitness, or merchantability accompany this product.  
Copyright 2007, All Rights Reserved, City of Seattle



**Displaying layers:**  
HouseNumbers  
Parcels  
PotentialSlide

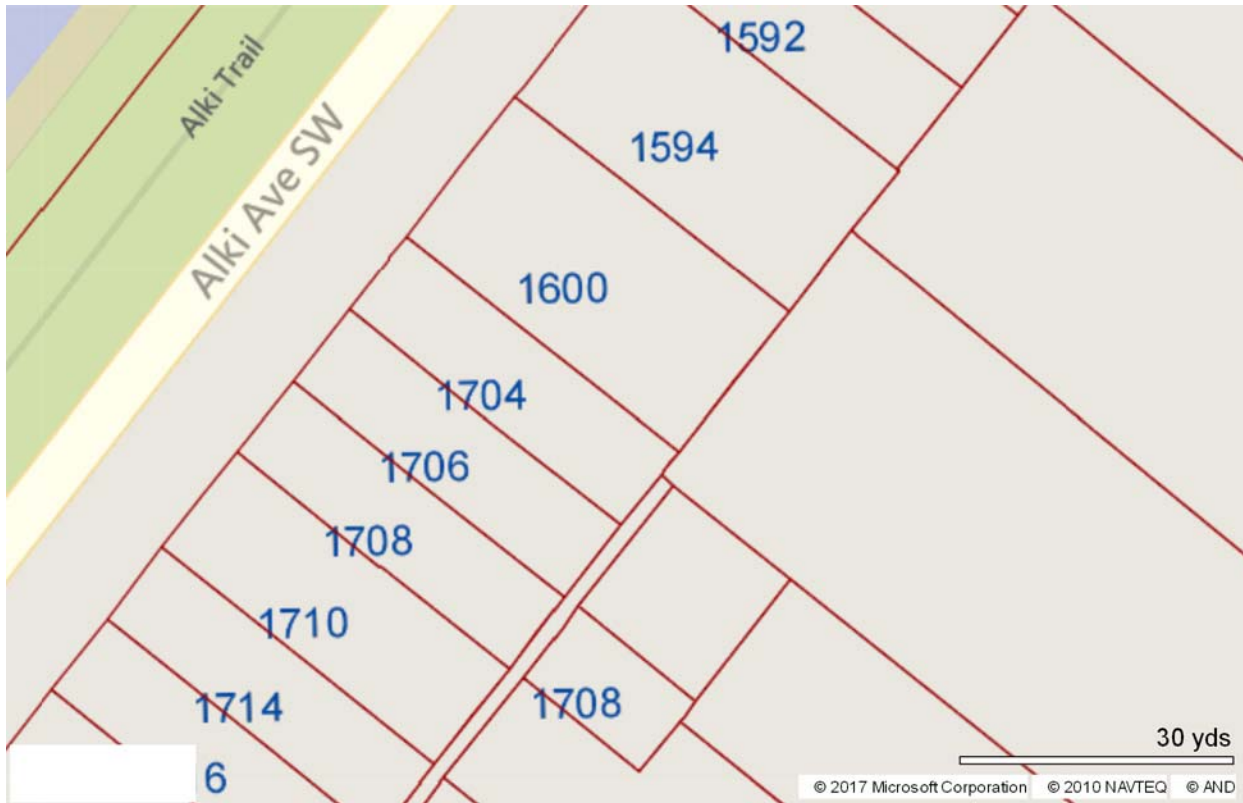
No warranties of any sort, including accuracy, fitness, or merchantability accompany this product.  
Copyright 2007, All Rights Reserved, City of Seattle



**Displaying layers:**  
HouseNumbers  
Parcels  
SteepSlope

No warranties of any sort, including accuracy, fitness, or merchantability accompany this product.  
Copyright 2007, All Rights Reserved, City of Seattle

# **EXHIBIT B**

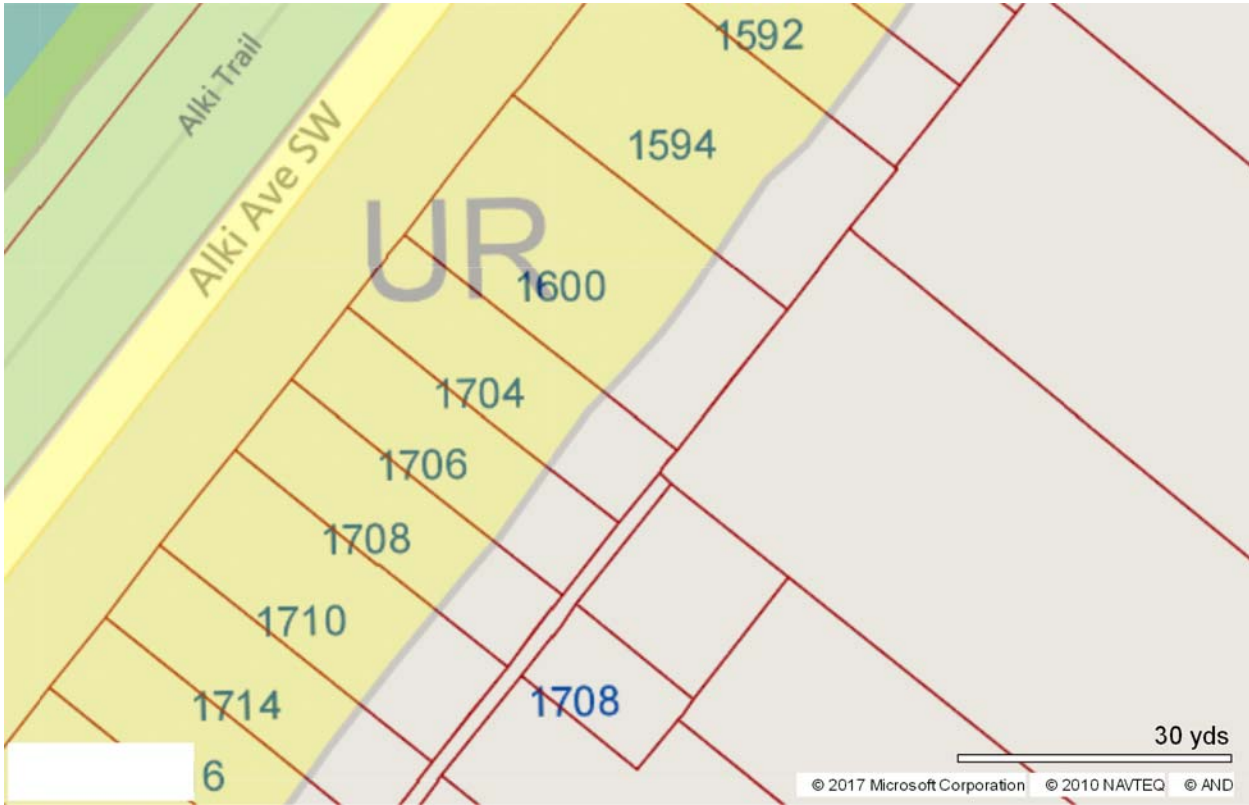


**Displaying layers:**

- HouseNumbers
- Parcels
- RiparianCorridors
- Wetlands
- FloodProne
- AbandonedLandfill
- PeatSettlementProneAreas
- Wildlife

No warranties of any sort, including accuracy, fitness, or merchantability accompany this product.  
Copyright 2007, All Rights Reserved, City of Seattle

# **EXHIBIT C**



**Displaying layers:**  
HouseNumbers  
Parcels  
ShorelineZoning

No warranties of any sort, including accuracy, fitness, or merchantability accompany this product.  
Copyright 2007, All Rights Reserved, City of Seattle